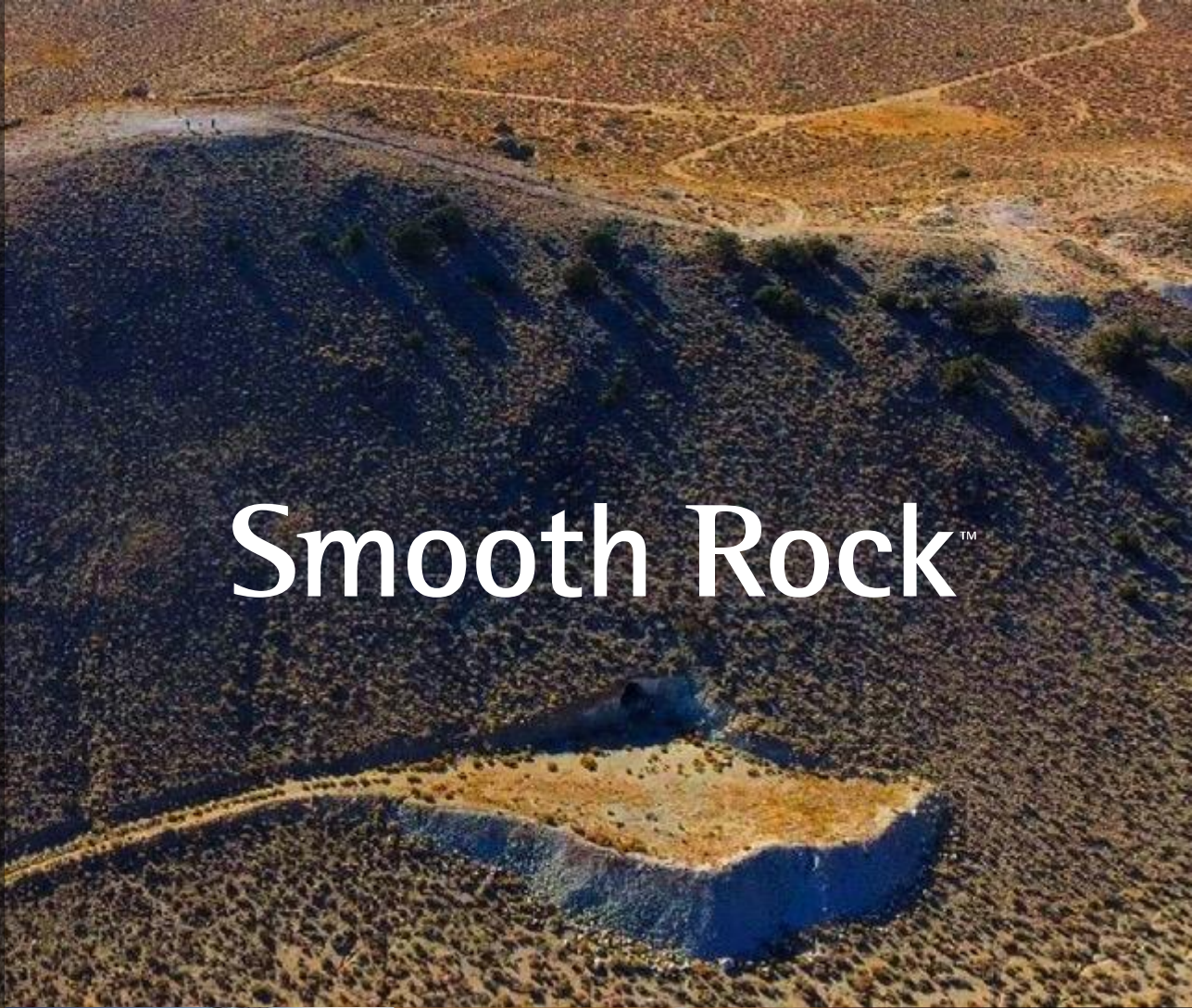


TSX.V: SMRV
OTCQB: SMRVF



Smooth Rock™





Disclaimer

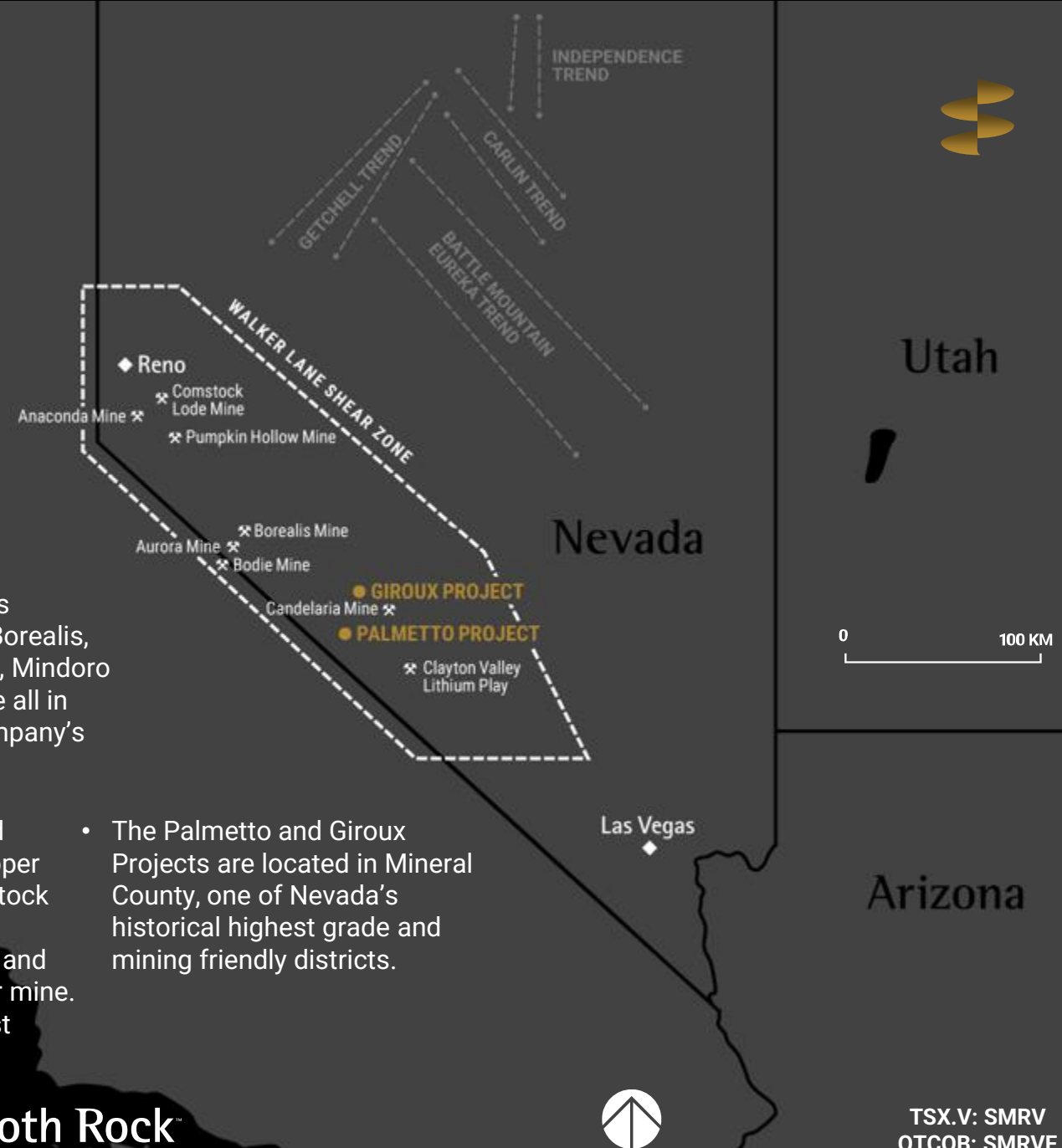
Certain statements herein may contain forward-looking information within the meaning of applicable securities laws. Forward-looking information appears in a number of places and can be identified by the use of words such as “intends” or variations of such words and phrases or statements that certain actions, events or results “may”, “could”, “would”, “might” or “will” be taken, occur or be achieved. Forward-looking information includes statements regarding the Company’s exploration plans with respect to the Property and the estimation of mineral resources and are subject to such forward-looking

risks, uncertainties and other factors which may cause the Company’s actual results, performance or achievements, or industry results, to be materially different from any future results, performance or achievements expressed or implied by such forward-looking information. Such risks include gold price volatility, change in equity markets, the uncertainties involved in interpreting geological data, increase in costs and exchange rate fluctuations and other risks involved in the gold exploration and development industry. There can be no assurance that forward-looking information referenced

herein will prove to be accurate, as actual results and future events could differ materially from those anticipated in such statements or information. Also, many of the factors are beyond the control of Smooth Rock Ventures. Accordingly, readers should not place undue reliance on forward-looking information. All forward looking information herein are qualified by this cautionary statement. The Company does not undertake to update such forward-looking information except in accordance with applicable securities laws.

IN THE HEART OF NEVADA'S WALKER TREND

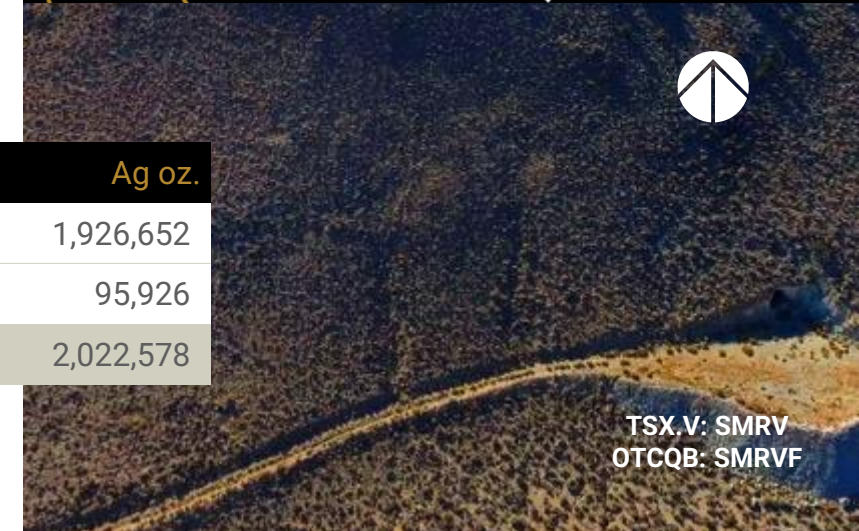
- The Walker Lane shear zone straddles the border between Nevada and California and has a long history of exploration and mining.
- The majority of gold deposits occur in the Walker Lane shear zone, which is a 100-km wide, NW trending structural corridor extending southeast from Reno towards Las Vegas.
- Several past-producing mines including the Bodie, Aurora, Borealis, Pamlico, Evening Star, Mabel, Mindoro and Camp Douglas mines are all in close proximity to all the Company's current Projects.
- The Walker Trend has hosted historical gold, silver and copper producers such as the Comstock Lode silver/gold mine, the Candelaria silver/gold mines and the prolific Anaconda Copper mine. These are some of the richest mines ever found.
- The Palmetto and Giroux Projects are located in Mineral County, one of Nevada's historical highest grade and mining friendly districts.



OWNERSHIP: 100% (subject to 2% GSR)

Palmetto Project

- Large land position consisting of 116 unpatented claims (2217 acres) in one of Nevada’s historical high grade mining districts.
- Advanced gold project with an NI 43-101 mineral resource estimate (WSP Canada Inc, October 2020) of 300,000 Au oz in the Inferred category.
- 2022 drill program highlights include DDH SRV 22-09 which returned **10.98 g/t Au over 9.2m**, including 18.87 g/t Au over 4.6m, from a depth of ~88m.
- 2021 drill program highlights include DDH SRV 21-01 which returned **31.4 g/t Au over 6.5m**, including 44.3 g/t Au over 0.8m, and 122.5 g/t Au over 1.1m from a depth of ~85m.
- Decline completed to a depth of ~100m accesses the high-grade portion of the initial Discovery Zone.
- Significant previous work completed by Newmont Gold, Phelps Dodge Corp, Cambior Inc. and others.
- Discovery Hole drilled by Phelps Dodge in 1990 returned **25 feet grading 1.982 oz/t Au.**



| Classification | Tonnes (000's) | Au g/t | Ag g/t | Au oz. | Ag oz. |
|-----------------------|----------------|-------------|-------------|----------------|------------------|
| Inferred (Pit) | 9,397 | 0.93 | 6.38 | 281,581 | 1,926,652 |
| Inferred (U/G) | 170 | 2.76 | 17.51 | 11,114 | 95,926 |
| Total Inferred | 9,567 | 0.96 | 6.58 | 296,695 | 2,022,578 |

** Smooth Rock considers this a current resource estimation, that is reliable and relevant completed by WSP Canada Inc. (Palmetto Resource Estimation and Technical Report, October 20, 2020) on behalf of Smooth Rock Ventures Corp. The mineral resource estimation was completed using NI 43-101 standards of practice and classified as an inferred resource is summarized in the table above.





PALMETTO PROJECT

Claims Map



 Property Boundary

 Initial Claims

 Additional Claims August 2020

Smooth Rock™



NORTHWEST ZONE

DISCOVERY ZONE

Decline Entrance

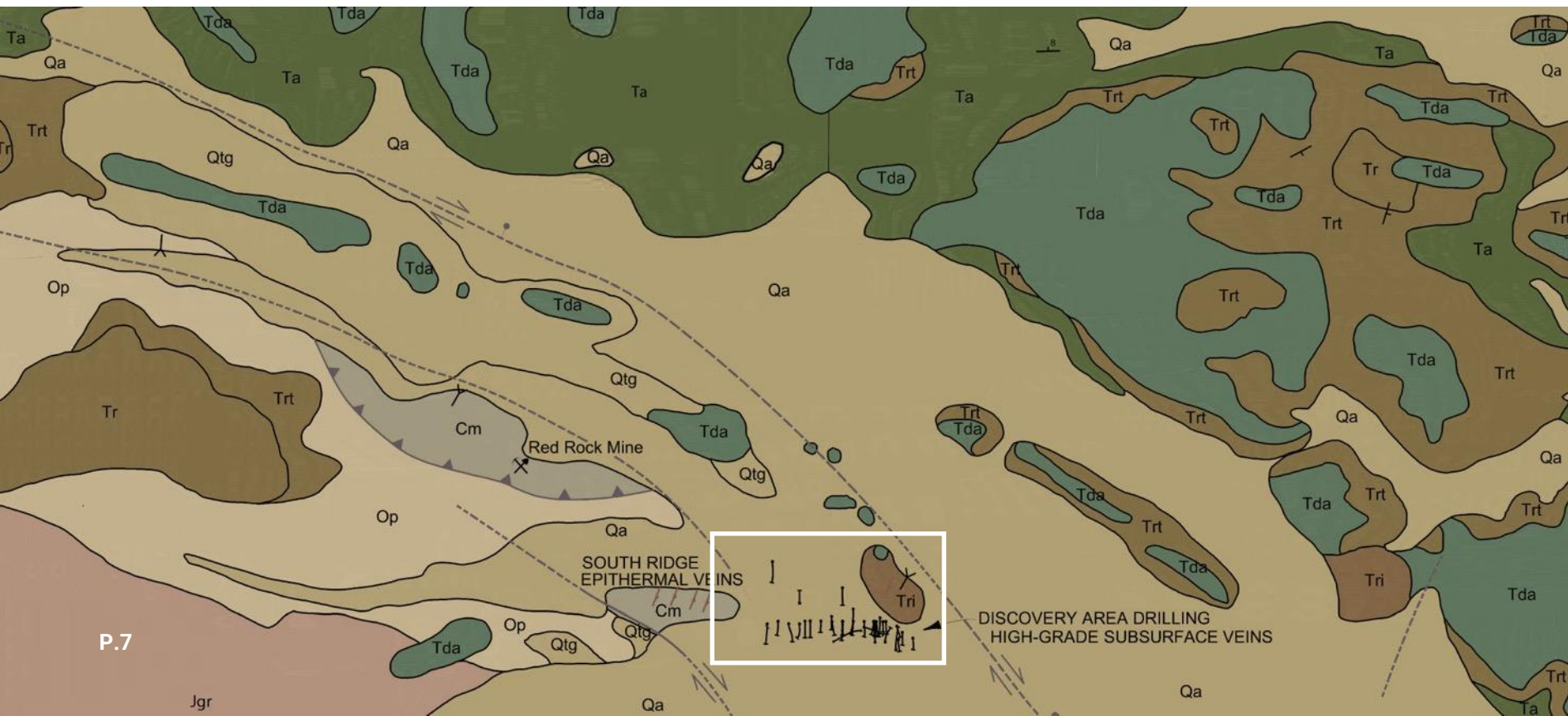
PALMETTO PROJECT

Exploration Zones



PALMETTO PROJECT

Geology Map with Historical Drill Holes



- / Quartz Vein
- Younger Alluvium & Gravel (Qa)
- Older Gravel and Alluvium, (Qtg)
- Andesite Flows (Tda)
- Rhyolite Flows (Tr)
- Rhyolite Tuff (Trt)
- Rhyolite Flow Domes & Plugs (Tri)
- Andesite (Ta)
- Granitic Plutonic Rocks (Jgr)
- Palmetto Formation (Op)
- Marble (Cm)

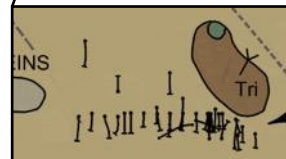
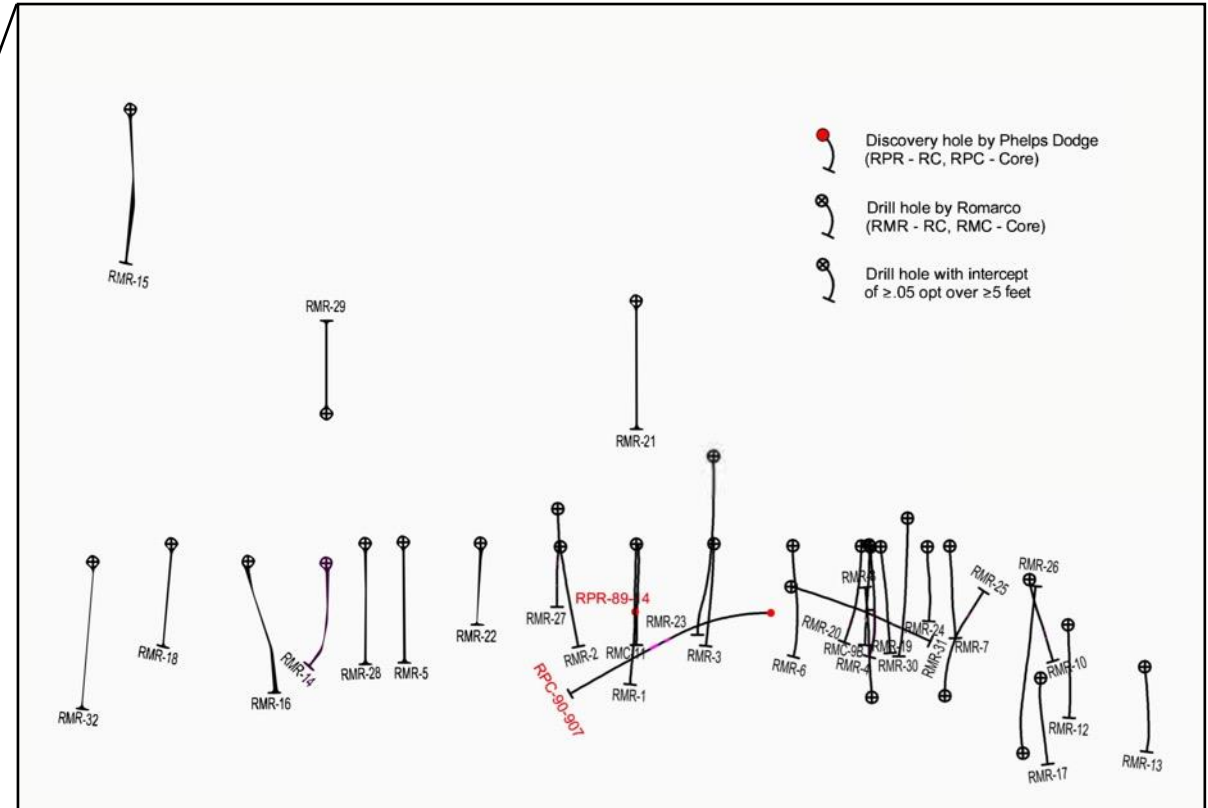




PALMETTO PROJECT

Discovery Area Historical Drilling

| Hole # | Interval (ft.) | Intercept (ft.) | Gold (oz/t) |
|-------------------|------------------|-----------------|--------------|
| RMR-1 | 340-345 | 5 | .506 |
| RMR-2 | 550-555 | 5 | .44 |
| RMR-3 | 445-450 | 5 | .239 |
| RMR-4 | 405-520 | 115 | 1.612 |
| RMR-5 | 465-470 | 5 | .137 |
| | 695-700 | 5 | .103 |
| RMR-6 | 450-455 | 5 | .233 |
| RMR-9b | 476-491.8 | 15.8 | .150 |
| | 476-477-5 | 1.5 | 1.044 |
| | 488.5-491.8 | 3.3 | .229 |
| RMR-10 | 520-525 | 5 | .173 |
| RMR-14 | 480-520 | 40 | .311 |
| RMR-16 | 385-400 | 15 | .106 |
| | 395-400 | 5 | .291 |
| RPC-90-907 | 450-475 | 25 | 1.982 |
| RPR-89-14 | 275-290 | 15 | .824 |
| | 320-330 | 10 | 1.330 |
| | 360-370 | 10 | 1.250 |
| RMR-20 | 490-520 | 30 | .110 |
| RMR-22 | 410-420 | 10 | .301 |
| RMR-23 | 780-785 | 5 | .363 |
| RMR-25 | 580-585 | 5 | .196 |
| RMR-30 | 510-520 | 10 | .278 |
| RMR-31 | 525-535 | 10 | .270 |
| | 695-700 | 5 | .503 |
| RMR-32 | 575-580 | 5 | .107 |

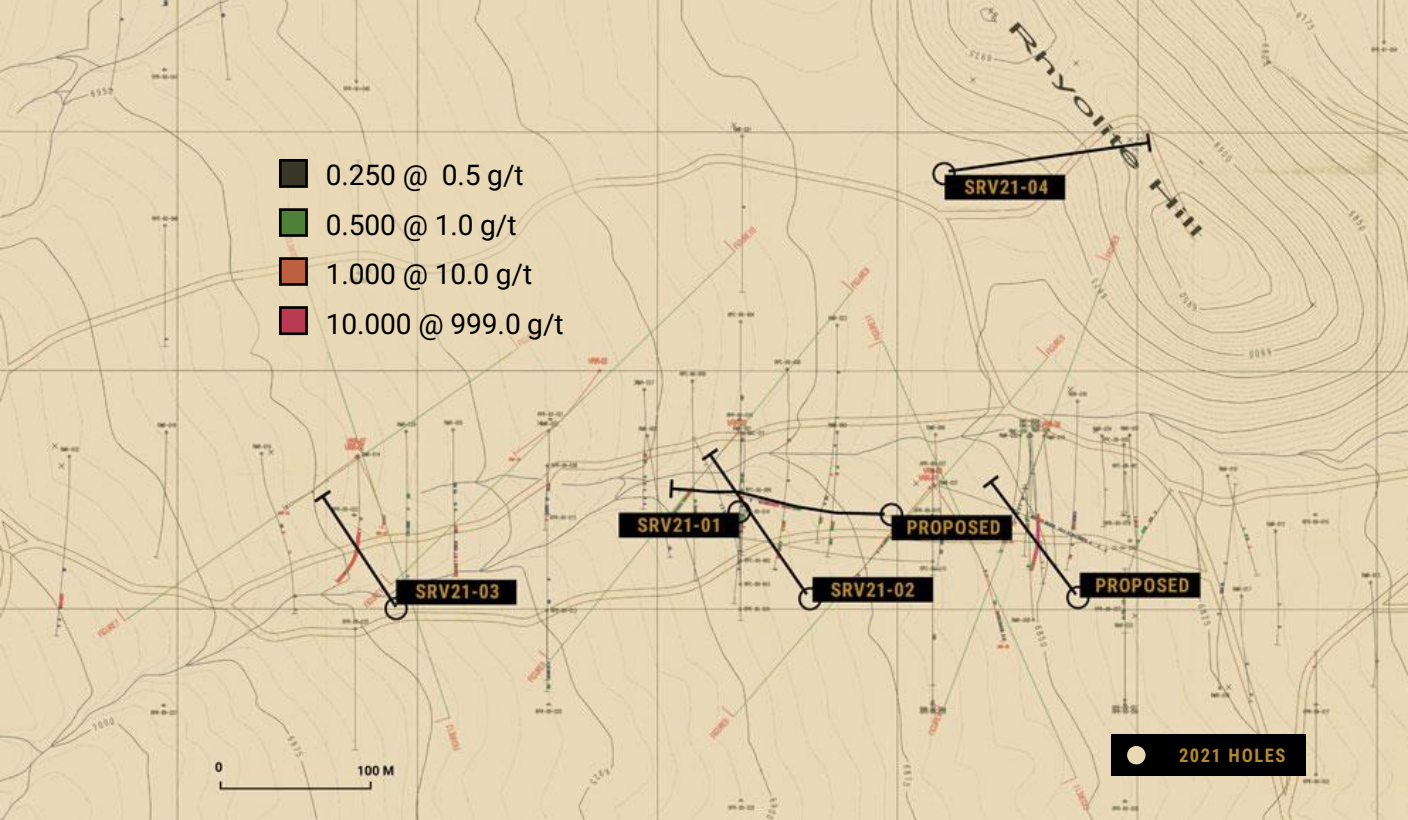




PALMETTO PROJECT

2023 Catalysts

- Drill programs in 2021 and 2022 both returned high grade intercepts
- Holes SRV 21-01 and SRV 22-09 located approximately 30m apart
- Follow up drilling in 2023
- Resource update anticipated in late 2023



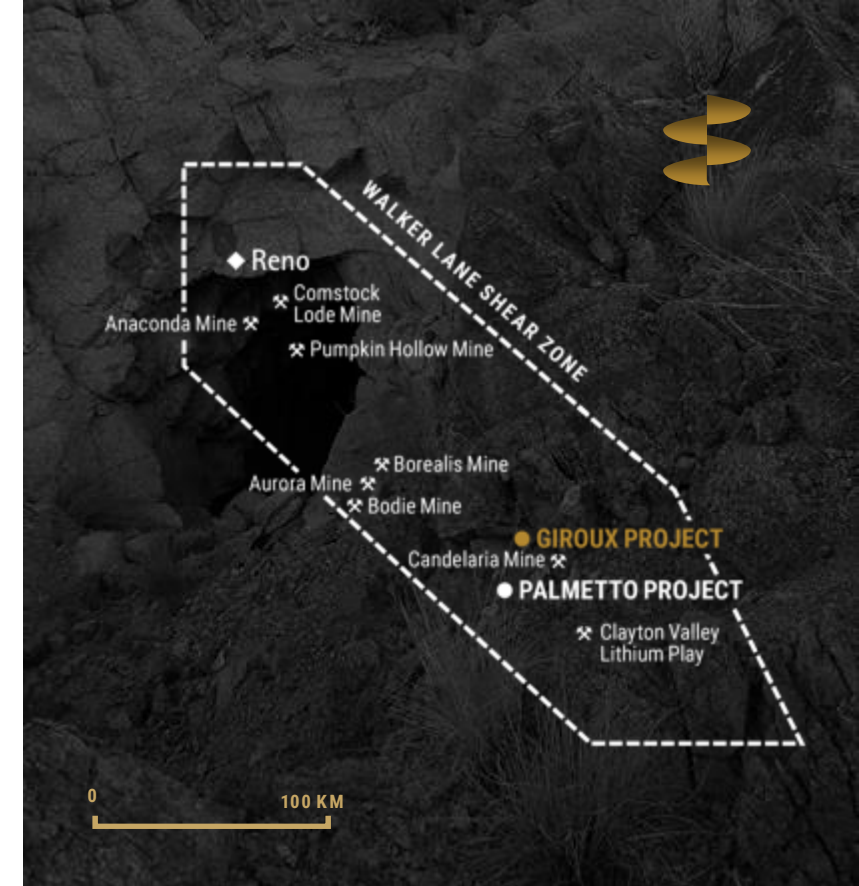
- 2022 drill program highlights include DDH SRV 22-09 which returned **10.98 g/t Au over 9.2m**, including 18.87 g/t Au over 4.6m, from a depth of ~88m.
- 2021 drill program highlights include DDH SRV 21-01 returned **31.4 g/t Au over 6.5m**, including 44.3g/t Au over 0.8m, and 122.5 g/t Au over 1.1m from a depth of ~85m.
- Initial 2023 drill program will target high grade mineralization proximal to existing high grade intercepts.
- Additional 2023 drilling to explore other mineralized zones hosting significant grades outside of the known resource area.
- Resource update anticipated in late 2023 with a focus on higher grade zones.
- Significant potential exists to expand the resource in multiple directions.



OWNERSHIP: 100%

Giroux Project

- Extensive Historical Workings consisting of shafts, adits, sub-levels and open pits.
- Historical Production of Nickel, Copper, Silver, Gold, and Barite.
- Reported as the highest grade nickel production in the history of Nevada (Mining Districts and Mineral Resources of Nevada, Lincoln, 1923).
- Recent Regional Surface Sampling Program by Current Owner yielded significant results. Highlights include: 1.17 % Ni -1.6 %Ni-1.7%Ni-3.9%Ni.
- Property is Drill Ready, Previous Exploration Programs completed; consisting of Geological Mapping, Prospecting, Surface Sampling and Geophysics.
- Located 1 km from main interstate highway, existing secondary roads provide easy access to the whole property.
- Located in the Candelaria Mining District within Mineral County Nevada, in close proximity (10 miles) to the largest open pit silver producer in the history of Nevada.
- Property consists of 49 Claims (incl. 12 patented claims covering historical mine workings) totaling 980 acres.

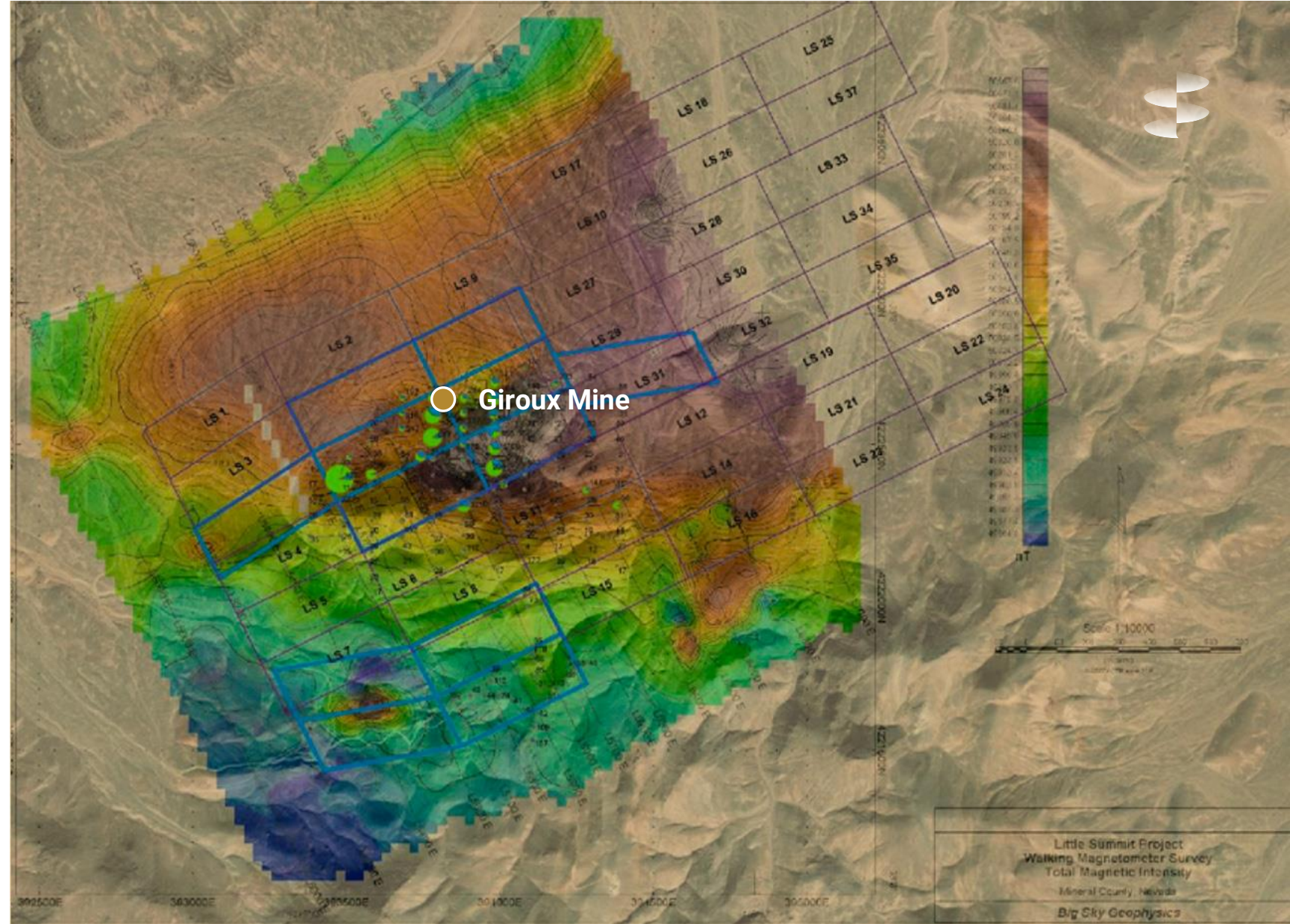


TSX.V: SMRV
OTCQB: SMRVF



GIROUX PROJECT

Claims Map





GIROUX PROJECT

Past Workings



GIROUX MINE



Management

CHRISTOS DOULIS

President, CEO and Director

Mr. Doulis has over 25 years of experience in the metals and mining space having held senior positions in mining equity research, investment banking and in industry. He was an award-winning research analyst at Stonecap Securities and PI Financial from 2010 to 2016. Prior to that Christos was a partner at Gryphon Partners as well as VP Investment Banking (Mining) at TD Securities. Most recently, Christos has served as a consultant and in a contract CEO capacity for several exploration companies focused in Western Newfoundland and Nevada. He holds a Bachelor of Arts in economics from Queen's University and is a CFA charter holder.

CHRIS HOBBS, CA

CFO, Director

Mr. Hobbs has worked with several public companies, accounting and securities firms in an accounting, management, director or CFO role in the past 20 years. Mr. Hobbs co-founded Pine Point Capital Advisors Inc., in January 2008 and has extensive experience in the investment banking sector. He served as a Senior Manager of KPMG LLP from 1990 to 1999. Mr. Hobbs is a member of the Chartered Accountants of Ontario and holds a bachelor of business administration degree from the Schulich School of Business at York University.

ALAN R. DAY, B.SC

VP Exploration and Director

Mr. Day has 30 years of exploration and mining experience with a focus on precious metals, copper and nickel. Alan has held senior project management roles in exploration, mining as well as environmental remediation programs within Nevada, Utah, Idaho, California, Alaska and Mexico. Mr. Day has extensive experience in property acquisitions and divestures, in addition to mineral claim locating with primary emphasis on Nevada. Mr. Day's company, Mineral Exploration Services, Ltd. was formed in 1998 to serve the mining industry in property acquisitions and divestures, claim locating, complete exploration services, including geological consulting and project management. Mineral Exploration Services, Ltd., operates primarily in the western United States, including Alaska, Mexico, and throughout the world. Clients have included Newmont Mining, Barrick Gold, Anglo American, Meridian Gold, Yamana Resources, Midway Gold and many public and private junior mining companies from all over the world.

MOHAMMAD FAZIL

Director

Mr. Fazil has been active in venture capital for over 35 years. He was employed by boutique investment dealers in Canada as a finance professional focusing on funding junior listed issuers on the TSX and TSX Venture exchange. During his career he has raised over \$400 million for venture companies. He is the Chairman of the Calgary branch of the TSX Venture Exchange's Listing Advisory Committee and a member of the National Advisory Committee.

Mr. Fazil is the founder and President of Lion Park Capital, a private financial advisory firm advising companies wanting to list on a Canadian stock exchange. He is currently and has served as a director & officer for several public companies both in the United States and Canada.



Smooth Rock™

Capital Structure

| | |
|--------------------------------------|-------------|
| Market Capitalization ⁽¹⁾ | \$2,467,479 |
| Issued | 24,674,794 |
| Options | 2,333,334 |
| Warrants | NIL |
| Fully Diluted | 27,008,127 |
| Cash and near cash ⁽²⁾ | ~\$700,000 |

(1) As of February 6, 2023

(2) As of February 6, 2023

Smooth Rock™

TSX.V: SMRV
OTCQB: SMRVF



Summary

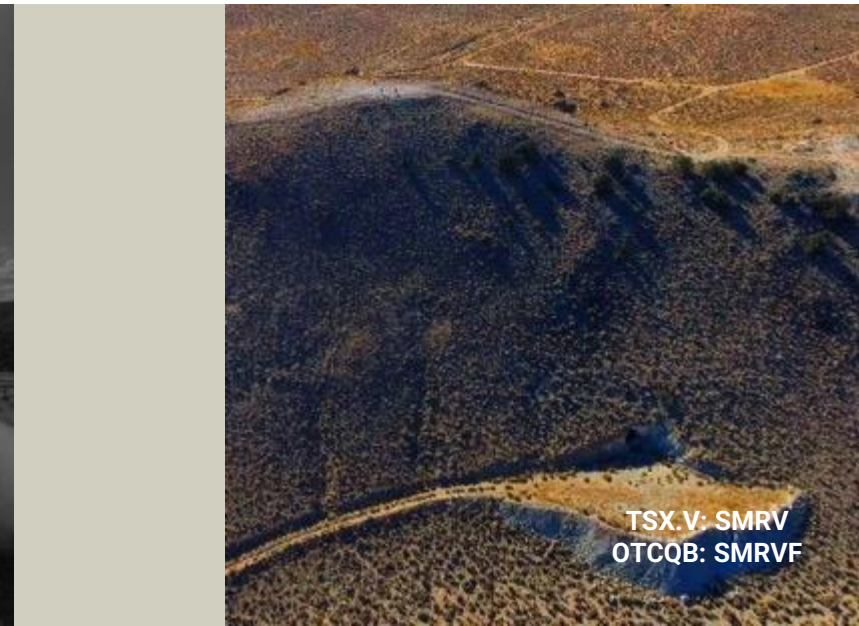
- Advanced Palmetto Gold Project with an NI 43-101 mineral resource estimation (WSP Canada Inc, October 2020) of 300,000 oz Au inferred resources. Excellent Potential for regional expansion of resource.
- Drilling in 2023 at Palmetto will focus on recent high grade drill intercepts returned in 2021 and 2022.
- Resource update anticipated in late 2023.
- A large and strategic land position in multiple projects in one of Nevada's historical highest grade mining districts. Projects located in the state of Nevada, continually rated as one of the best places to explore and mine within the world.
- Excellent infrastructures in place with year round access in proven mining districts with minimal modern day exploration.
- Proven, experienced management team with an extensive knowledge of Nevada.
- Significant cash and near cash position of ~\$700,000 as at January, 17, 2023.



P.15



Smooth Rock™



TSX.V: SMRV
OTCQB: SMRVF

TSX.V: SMRV
OTCQB: SMRVF

Head Office:

Suite 820–1130 West Pender St.
Vancouver, BC V6E 4A4

Phone: 1.888.909.5548
Fax: 1.888.909.1033

Nevada Office:

103 S. Main St.
Yerington, NV 89447, USA

info@smoothrockventures.com
www.smoothrockventures.com



Smooth Rock™